



FROM OUR BENCH TO YOUR BENCH

- Antibodies against 12,000 targets
- Animal-free, human cell-expressed recombinant proteins
- ELISA kits
- \$99 tag/control antibodies
- 20ul trial size antibodies
- Fusion proteins

Proteintech products have been cited in over 30,000 publications worldwide.



ptglab.com



Continuous Glucose Telemetry DSI™

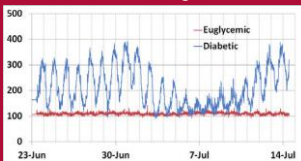
Collect continuous glucose data from conscious, freely moving subjects, from mice to large animals. Get data unimpeded by stress artifact, to make improved decisions from a complete data set.

Proven benefits

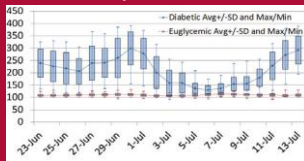
- Telemetry is among the most humane means of monitoring
- Fewer blood draws saves time and improves welfare
- Fewer animals are required (sample size reduction)
- Continuous stress-free data collection reduces variability
- Quantify glucose homeostasis & glycemic variability



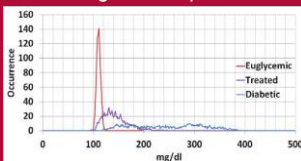
One Minute Average Glucose



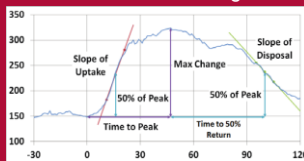
Daily Statistics



Histogram Comparison



New Biomarkers During GTT



Sable Promethion 代谢监测系列产品



小动物代谢测量分析系统

- 准确、快速、高效监测
- 代谢笼换气达15次/小时，符合 IACUC 标准
- 完整、同步的代谢表型分析
- 精确测量呼吸焓及热量，摄食和饮水，体重，自发活动，睡眠，行为学，体温，血压及血糖等

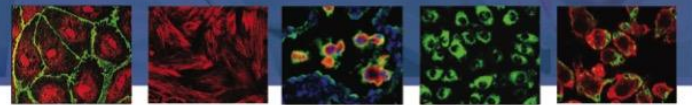
人体代谢监测舱

- 准确、快速、高效监测
- 精确测量基础代谢率，呼吸焓，热量消耗等
- 舱内生活环境舒适，适合长期监测
- 可整合人体生理，生化，心理及行为学等第三方监测系统



Sable Promethion 中国代表处

上海市静安区江宁路445号时美大厦17B
 电话：021-54251330 | 传真：021-58770063
 电邮：info@promethion.cn | 网站：www.promethion.cn



PRIMARY CELLS

HUMAN MOUSE RAT MONKEY PORCINE

- Endothelial Cells
- Epithelial Cells
- Bone Marrow Cells
- Diseased Cells
- Tumor Cells
- Stem Cells

FEATURED PRODUCTS

Mouse and Rat Endothelial Cells
 Diabetic Endothelial Cells
 Tumor-Associated Endothelial Cells

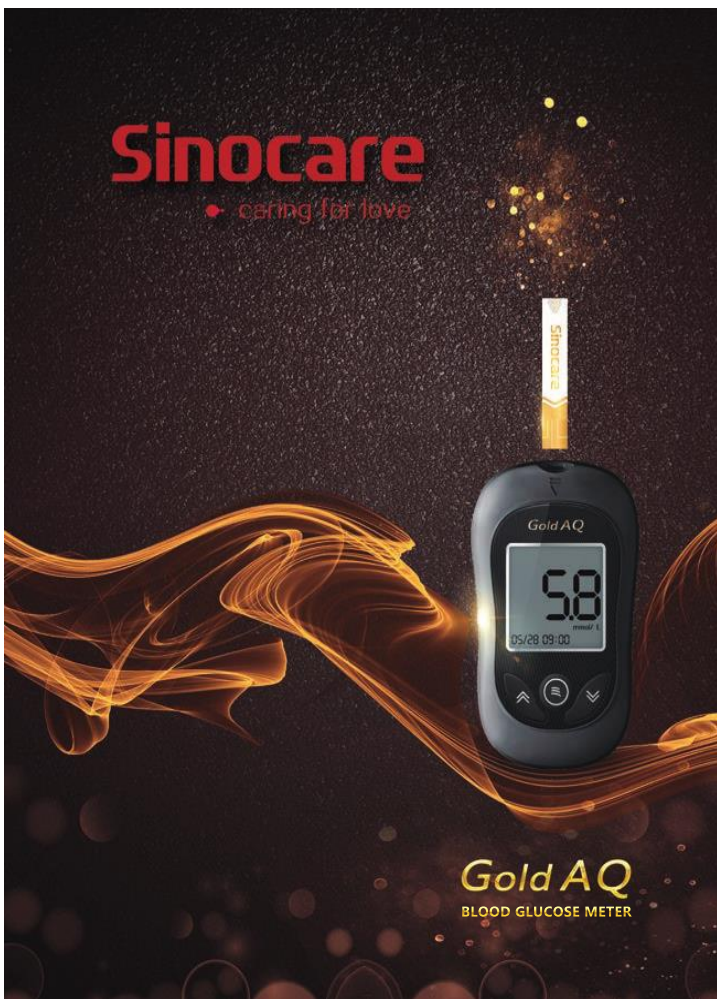
CELL CULTURE MEDIA



CUSTOM CELL ISOLATION

2201 West Campbell Park Drive | Chicago IL 60612 | USA

info@cellbiologics.com (312) 226-8198 www.cellbiologics.com



CADA 2018 - 4 reasons why_intake monitor combo.pdf 1 4/23/2018 6:59:58 PM

ResearchDiets.com

5 reasons why

UNMATCHED Scientific Support	OPEN Formulas	CUSTOM Purified Diets	DIETS Ship in 5-7 days
----------------------------------------	-------------------------	---------------------------------	----------------------------------

INTAKE MONITORING SYSTEMS
Automatically measure food in mice, rats and NOW NHPs!

RESEARCH DIETS INC. **OpenSource DIETS** **BioDAQ INTAKE MONITOR**



One Innovation Drive, Biotech 3, Suite 430, Worcester, MA
01605, USA
Website: www.biocytogen.com
Email: info@biocytogen.com
Phone: 508-421-4800

Biocytogen was founded in 2009 and headquartered in Beijing, with three affiliates both in US and China. We are one of the global leaders in gene targeted animal model production, preclinical *in vivo* efficacy studies and pharmacological services. We have developed two excellent platforms: 1) **custom gene targeting service platform**, which features our innovative CRISPR-based Extreme Genome Editing (EGE[®]) technology. EGE[®] technology increases large fragment knockin efficiency by 10-20 fold for multiple gene editing models including cell lines, rats, mice and other species at low cost. Over 2,000 knockout/knockin mouse and rat models have been delivered worldwide, and this number is rapidly expanding. 2) **Immuno-Oncology drug service platform**, which is comprised of humanized immune checkpoint mouse models (e.g. B-hPD-1 mice) and immunodeficient animals with human immune system reconstruction (B-NDG mice). All models have been generated independently by Biocytogen. These models are very useful in *in vivo* efficacy studies to directly evaluate antibody and compound candidates targeting specific human immune checkpoints at various stages of your drug development.

>1600 annual customers

>300 publications output

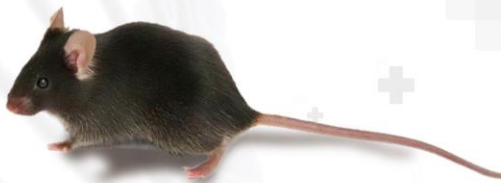
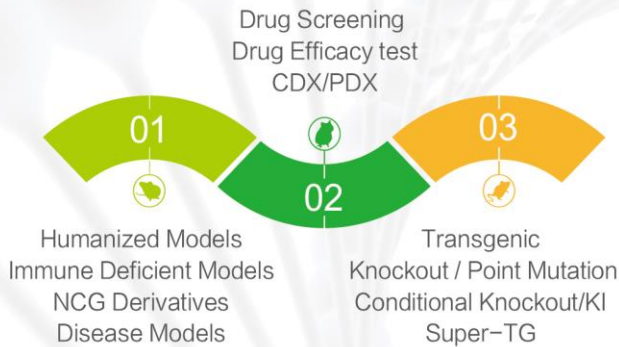
>4000 strains preserved

>180 global CRO partners

International Phenotype Screening Platform



GemPharmatech



Neuro & Behavior
PPI, SHIRPA
Water Maze, Open Field

Blood & Immune
FACS, ELISA
Blood Test

Development Science
Morphologic Screening
Embryonic Screening

Metabolism
Metabolic Cage/IPGTT

Cardiovascular
Echo, Cardiograph

Orthopaedics
X-ray
Bone Density

Sensory
Ophthalmorphics
Hearing Reaction



1 608-471-9508

+86 025 58265927

wupf@gempharmatech.com

www.gempharmatech.com

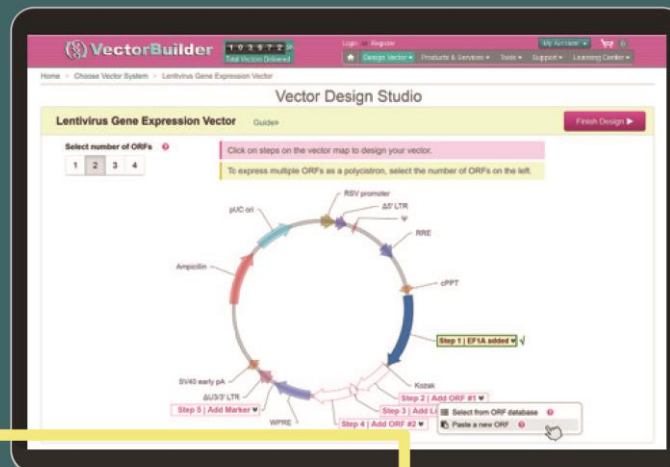


Publish Sooner! How? Skip cloning and focus on science

Let us make your vectors

Design your vectors online for free
Order fast, economical cloning services based on your design
Lentivirus, adenovirus, AAV, shRNA, gRNA, and many more

We can package your virus, too!



Visit vectorbuilder.com

Does your lab love coffee?
Get a \$25 Starbucks® giftcard
with any order of \$300 or more!

use code:
FREEJAVA
expires September 30, 2018

Send one giftcard per customer. Giftcards will be emailed 4-6 weeks following payment of order; cannot be combined with other discounts or promotions, offer void where prohibited, licensed, or restricted by federal, state, provincial, or local laws or regulation or agency/institutional policy. Other restrictions may apply.